



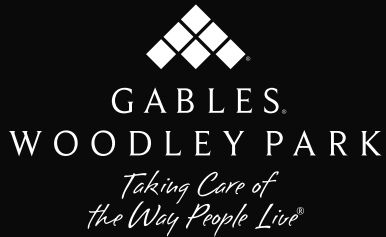
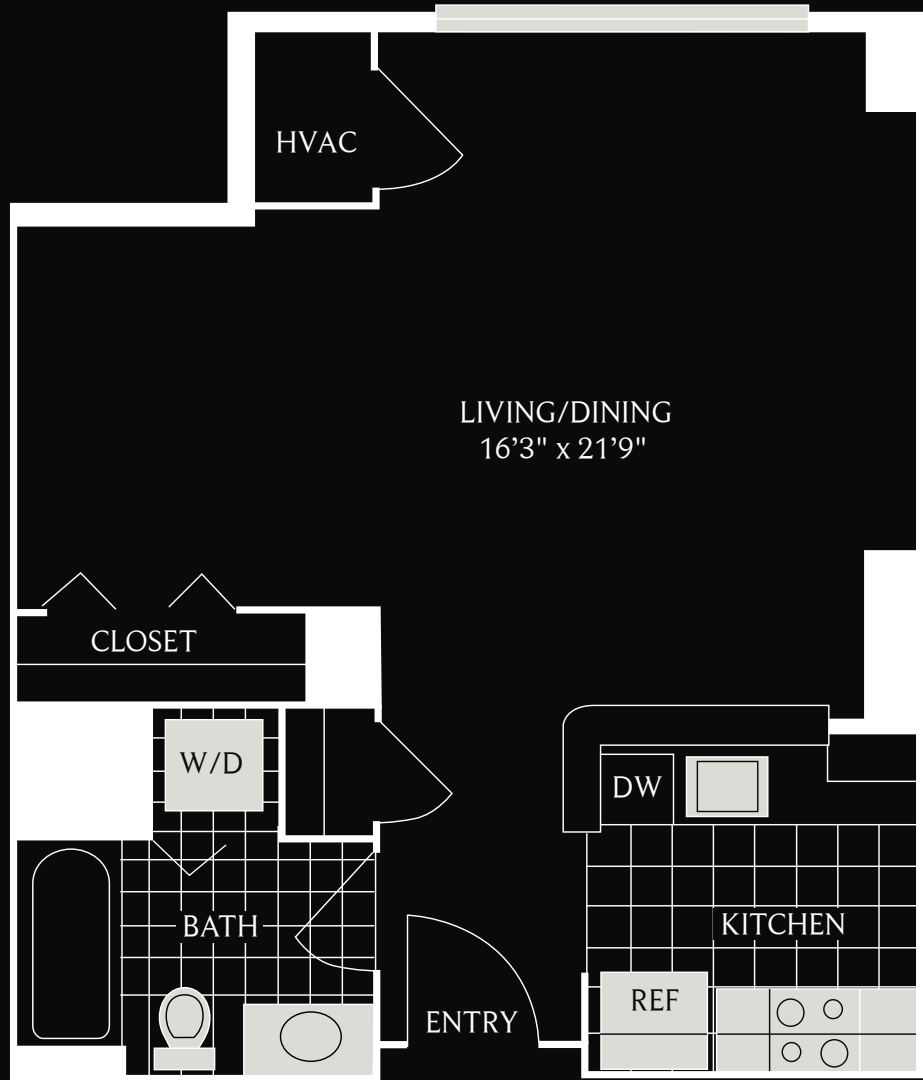
MORE LIVING ONE ADDRESS

GABLES WOODLEY PARK *FLOOR PLANS*

2701 Calvert Street, NW, Washington, DC 20008
t: 202-232-2610 f: 202-232-7373 www.gables.com/woodleypark woodleypark@gables.com



Ashford
Studio
580 SQ. FT



Assisted By: _____
Unit #: _____
Rent: _____



2701 Calvert Street, NW, Washington, DC 20008
t: 202-232-2610 f: 202-232-7373 | www.gables.com/woodleypark | woodleypark@gables.com



Bolton
One Bedroom/One Bath
716 SQ. FT



GABLES.
WOODLEY PARK

*Taking Care of
the Way People Live®*

Assisted By: _____

Unit #: _____

Rent: _____



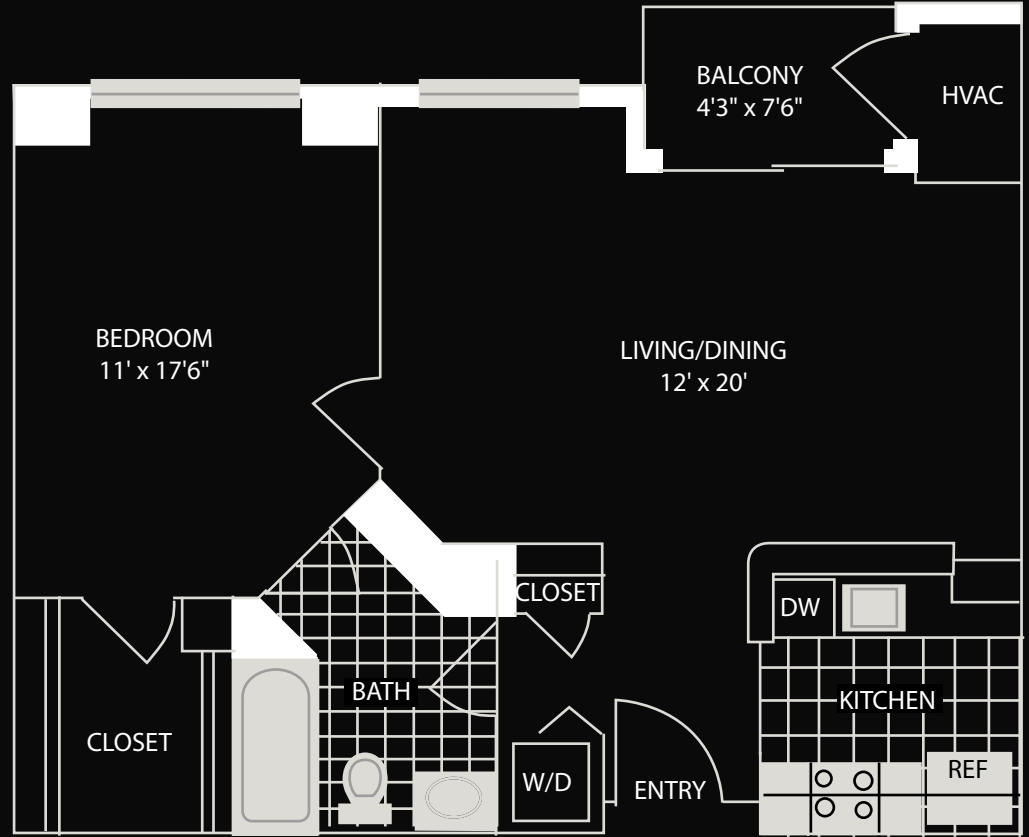
2701 Calvert Street, NW, Washington, DC 20008

t: 202-232-2610 f: 202-232-7373 | www.gables.com/woodleypark | woodleypark@gables.com



GABLES.
WOODLEY PARK

Carleton
One Bedroom/One Bath
756 SQ. FT



GABLES.
WOODLEY PARK
*Taking Care of
the Way People Live®*

Assisted By: _____
Unit #: _____
Rent: _____

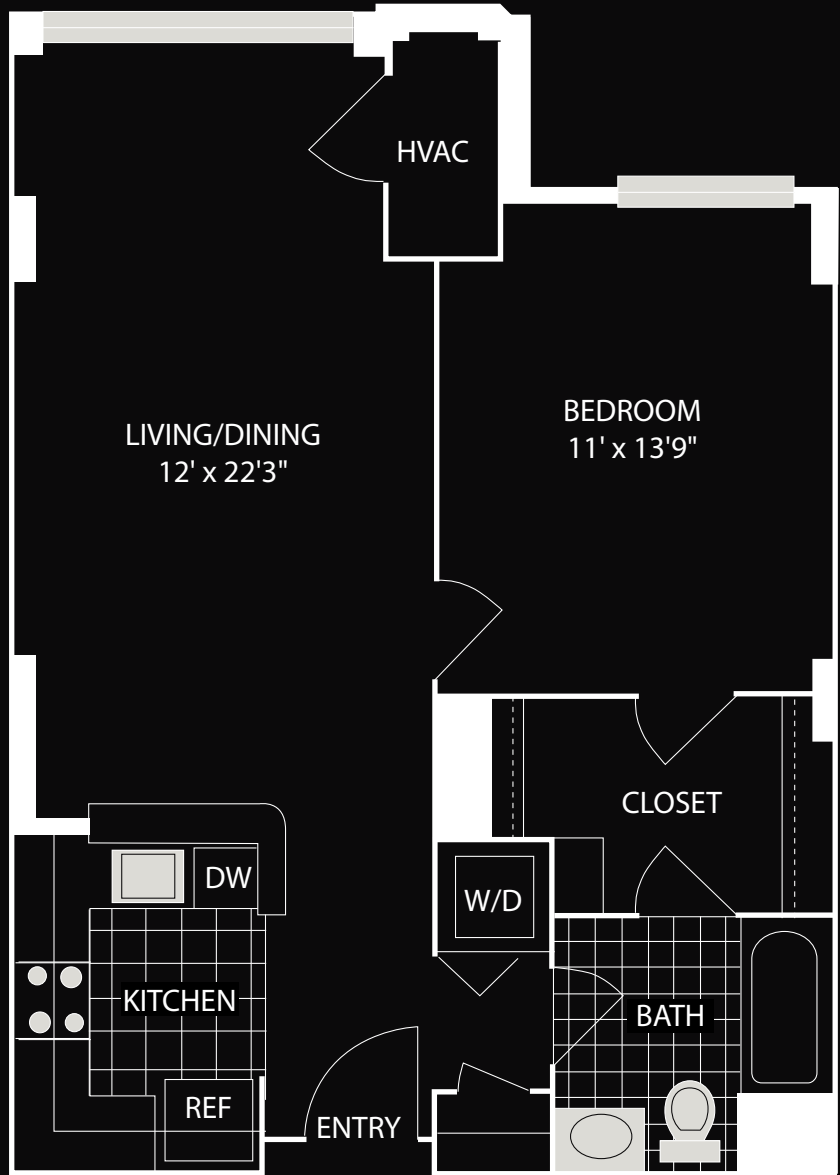



2701 Calvert Street, NW, Washington, DC 20008
t: 202-232-2610 f: 202-232-7373 | www.gables.com/woodleypark | woodleypark@gables.com



GABLES.
WOODLEY PARK

Dalton
One Bedroom/One Bath
767 SQ. FT




GABLES.
WOODLEY PARK
*Taking Care of
the Way People Live®*

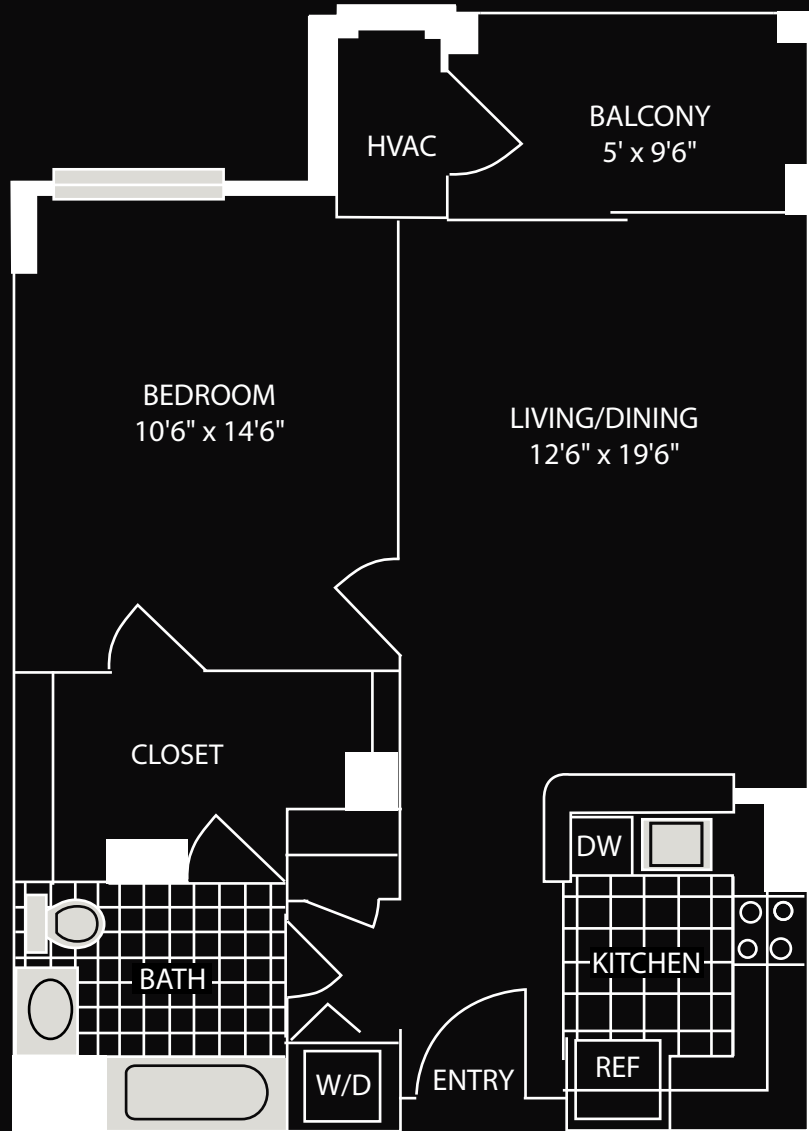
Assisted By: _____
Unit #: _____
Rent: _____




2701 Calvert Street, NW, Washington, DC 20008
t: 202-232-2610 f: 202-232-7373 | www.gables.com/woodleypark | woodleypark@gables.com


GABLES.
WOODLEY PARK

Easton
One Bedroom/One Bath
772 SQ. FT




**GABLES.
WOODLEY PARK**
*Taking Care of
the Way People Live®*

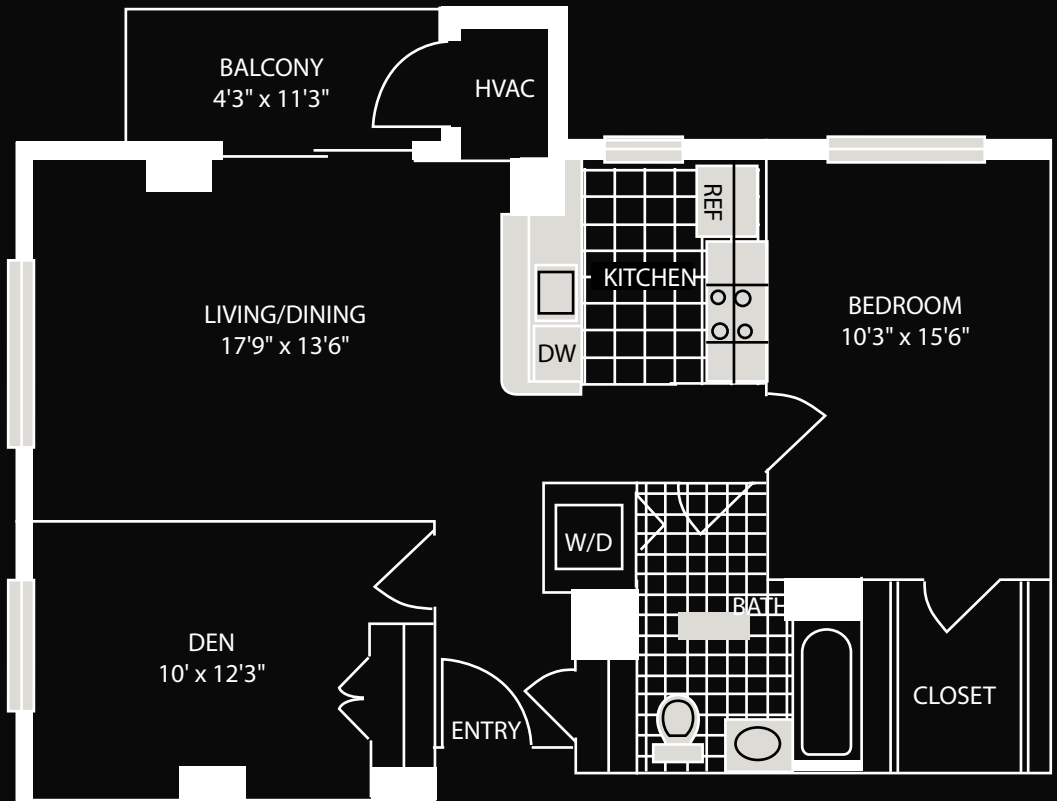
Assisted By: _____
Unit #: _____
Rent: _____



2701 Calvert Street, NW, Washington, DC 20008
t: 202-232-2610 f: 202-232-7373 | www.gables.com/woodleypark | woodleypark@gables.com


**GABLES.
WOODLEY PARK**

Forsythe
One Bedroom/Den
950 SQ. FT



GABLES.
WOODLEY PARK

*Taking Care of
the Way People Live®*

Assisted By: _____

Unit #: _____

Rent: _____



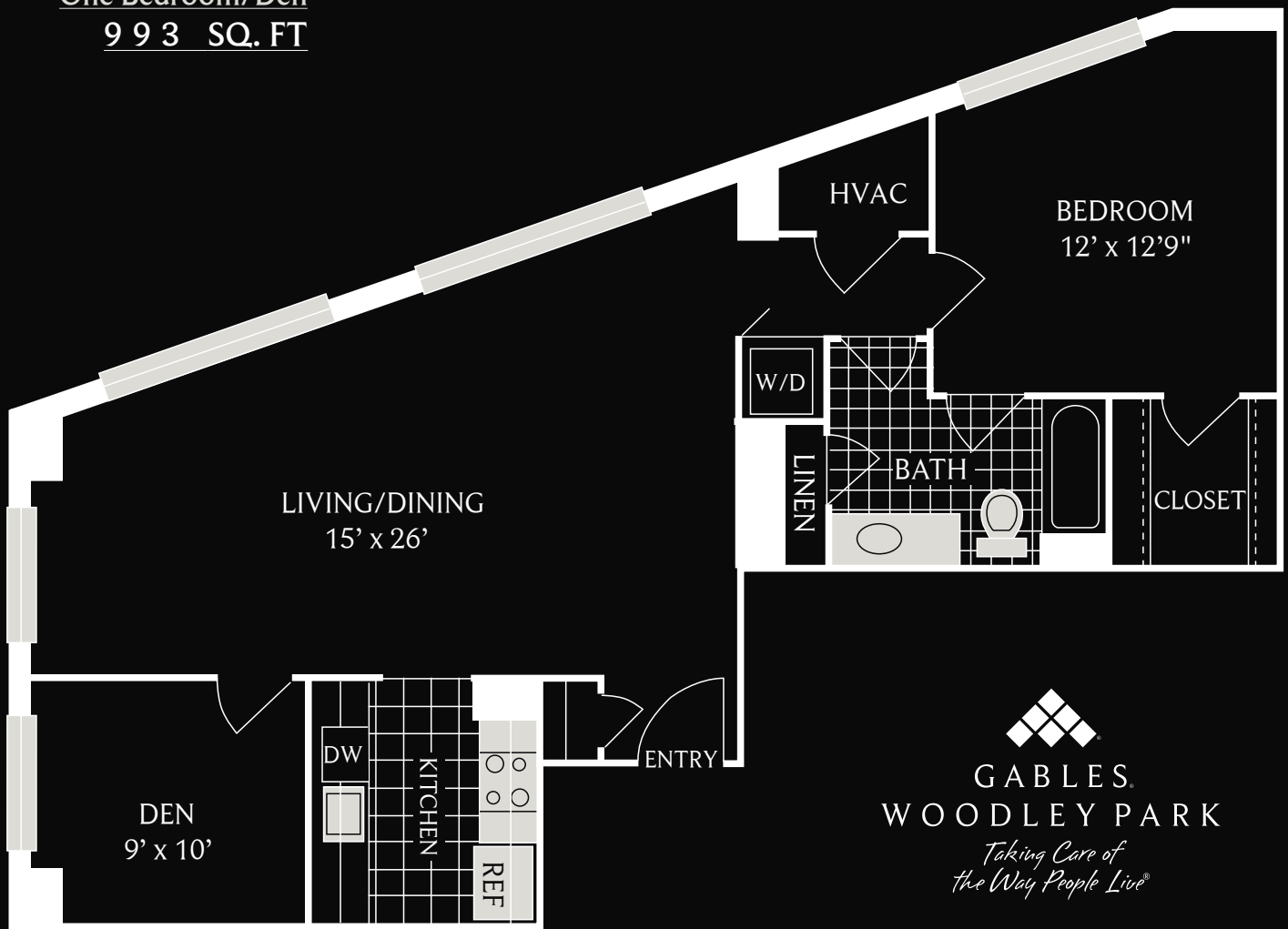
2701 Calvert Street, NW, Washington, DC 20008


t: 202-232-2610 f: 202-232-7373 | www.gables.com/woodleypark | woodleypark@gables.com



GABLES.
WOODLEY PARK

Glenwood
One Bedroom/Den
993 SQ. FT




GABLES.
WOODLEY PARK
*Taking Care of
the Way People Live®*

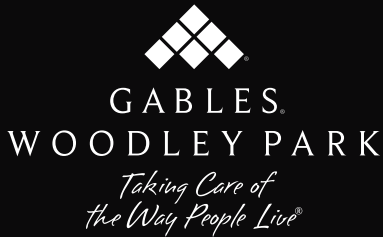
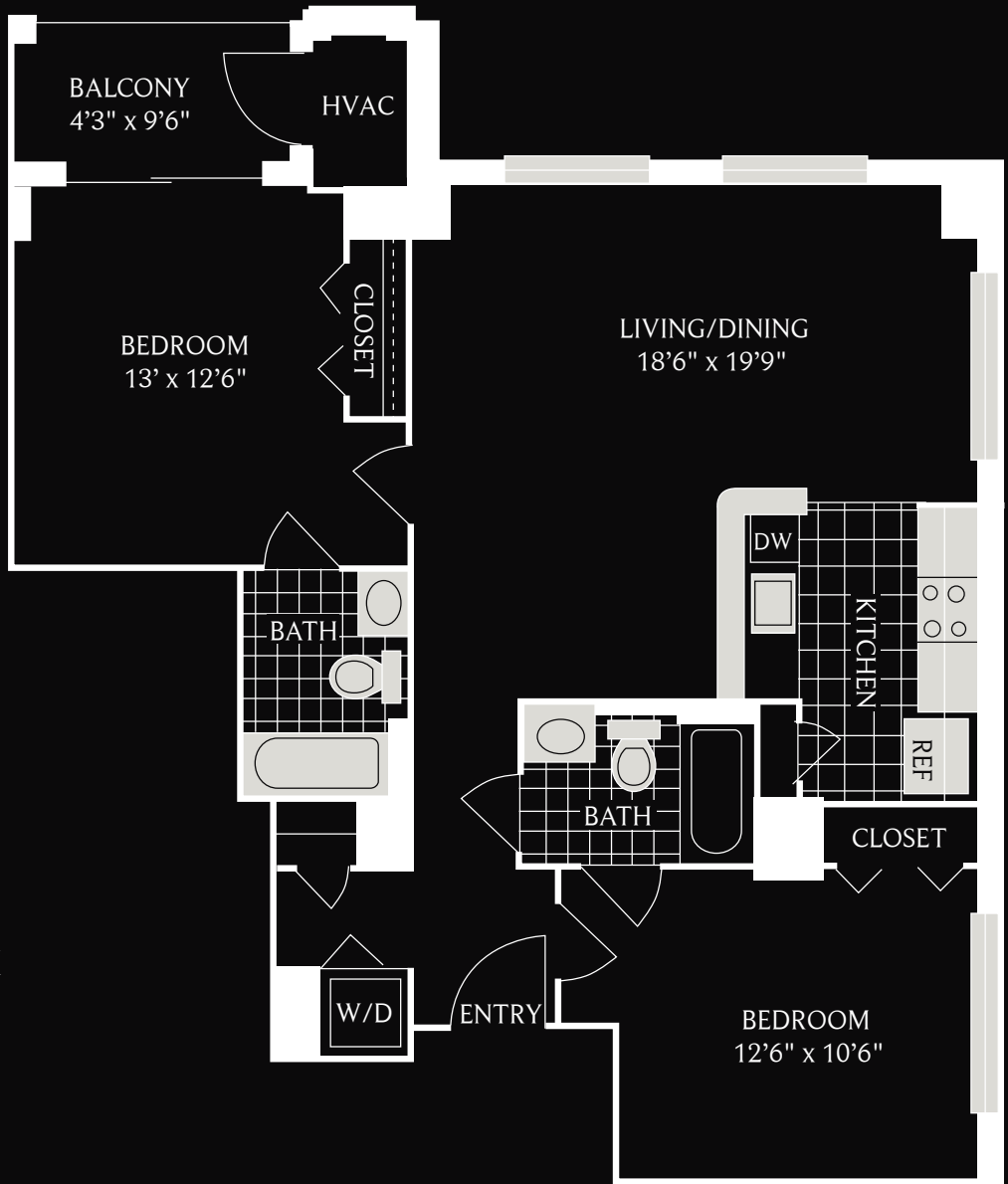
Assisted By: _____
Unit #: _____
Rent: _____



2701 Calvert Street, NW, Washington, DC 20008
t: 202-232-2610 f: 202-232-7373 | www.gables.com/woodleypark | woodleypark@gables.com


GABLES.
WOODLEY PARK

Hemsby
Two Bedroom/Two Bath
1,057 SQ. FT



Assisted By: _____
Unit #: _____
Rent: _____

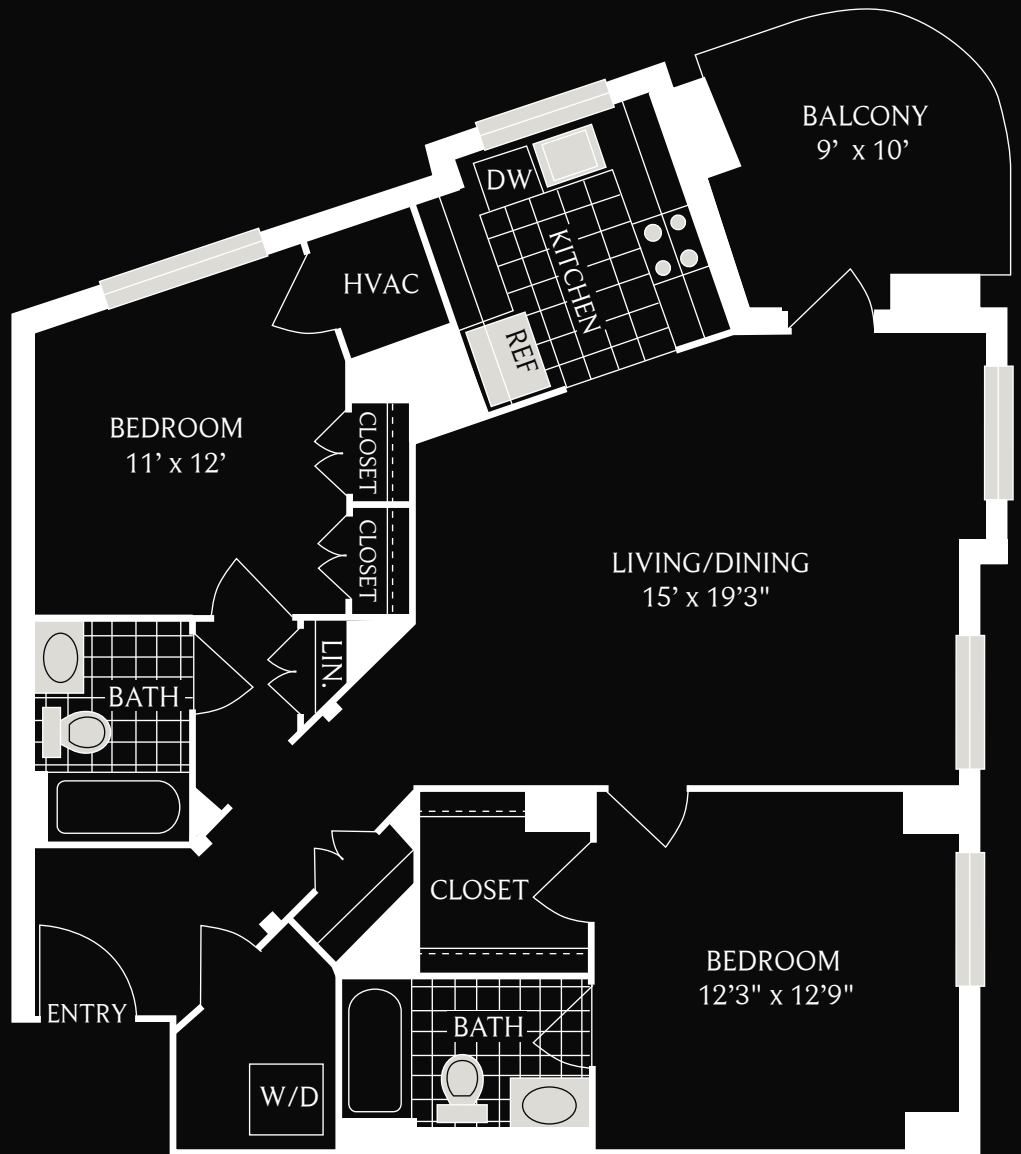


2701 Calvert Street, NW, Washington, DC 20008

t: 202-232-2610 f: 202-232-7373 | www.gables.com/woodleypark | woodleypark@gables.com



Jaffrey
Two Bedroom/Two Bath
1,121 SQ. FT



**GABLES.
WOODLEY PARK**
*Taking Care of
the Way People Live®*

Assisted By: _____
Unit #: _____
Rent: _____



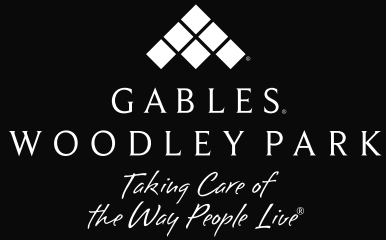
2701 Calvert Street, NW, Washington, DC 20008

t: 202-232-2610 f: 202-232-7373 | www.gables.com/woodleypark | woodleypark@gables.com



**GABLES.
WOODLEY PARK**

Kelsey
Two Bedroom/Two Bath
1,184 SQ. FT



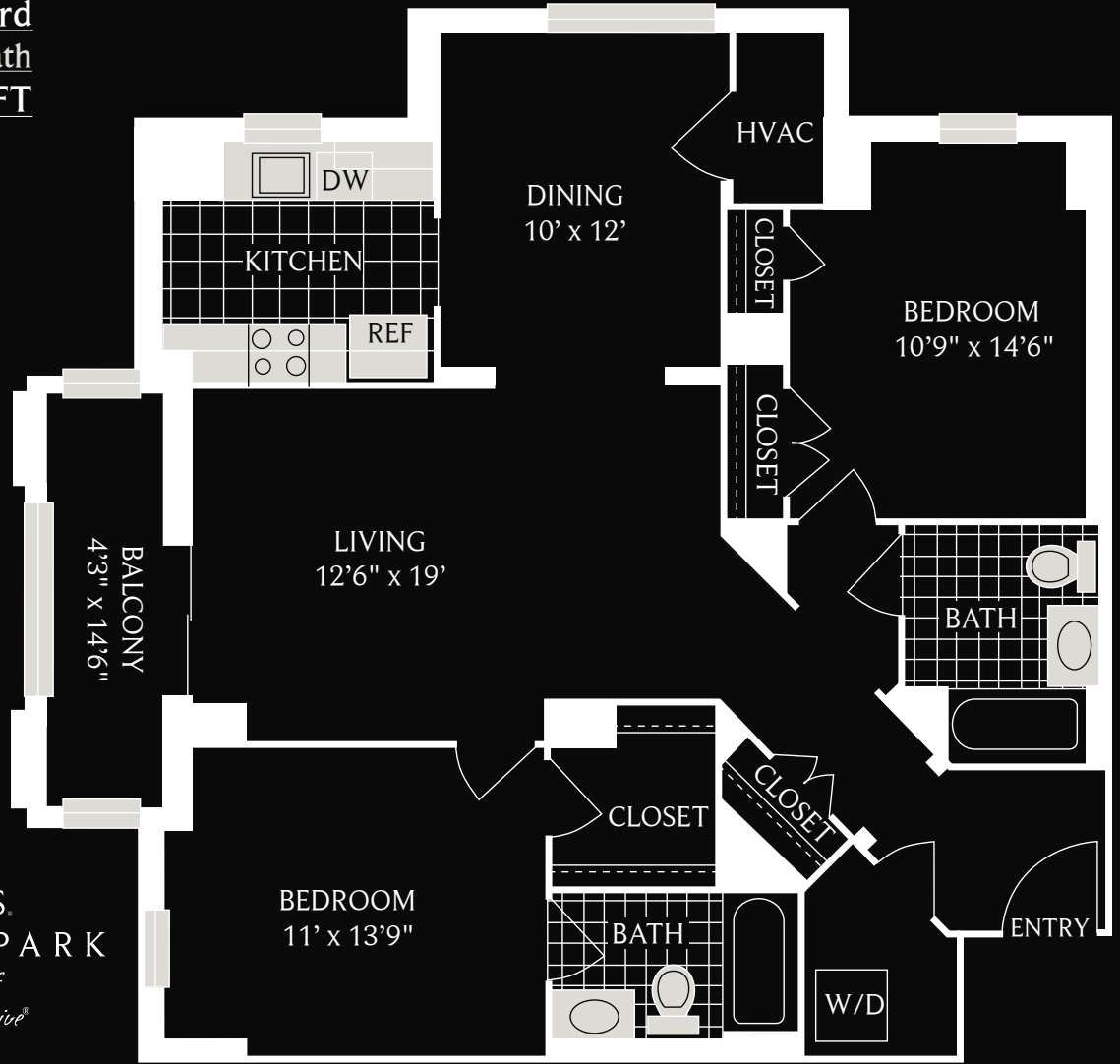
Assisted By: _____
Unit #: _____
Rent: _____



2701 Calvert Street, NW, Washington, DC 20008
t: 202-232-2610 f: 202-232-7373 | www.gables.com/woodleypark | woodleypark@gables.com



Lawford
Two Bedroom/Two Bath
1,236 SQ. FT



GABLES.
WOODLEY PARK
*Taking Care of
the Way People Live®*

Assisted By: _____
Unit #: _____
Rent: _____



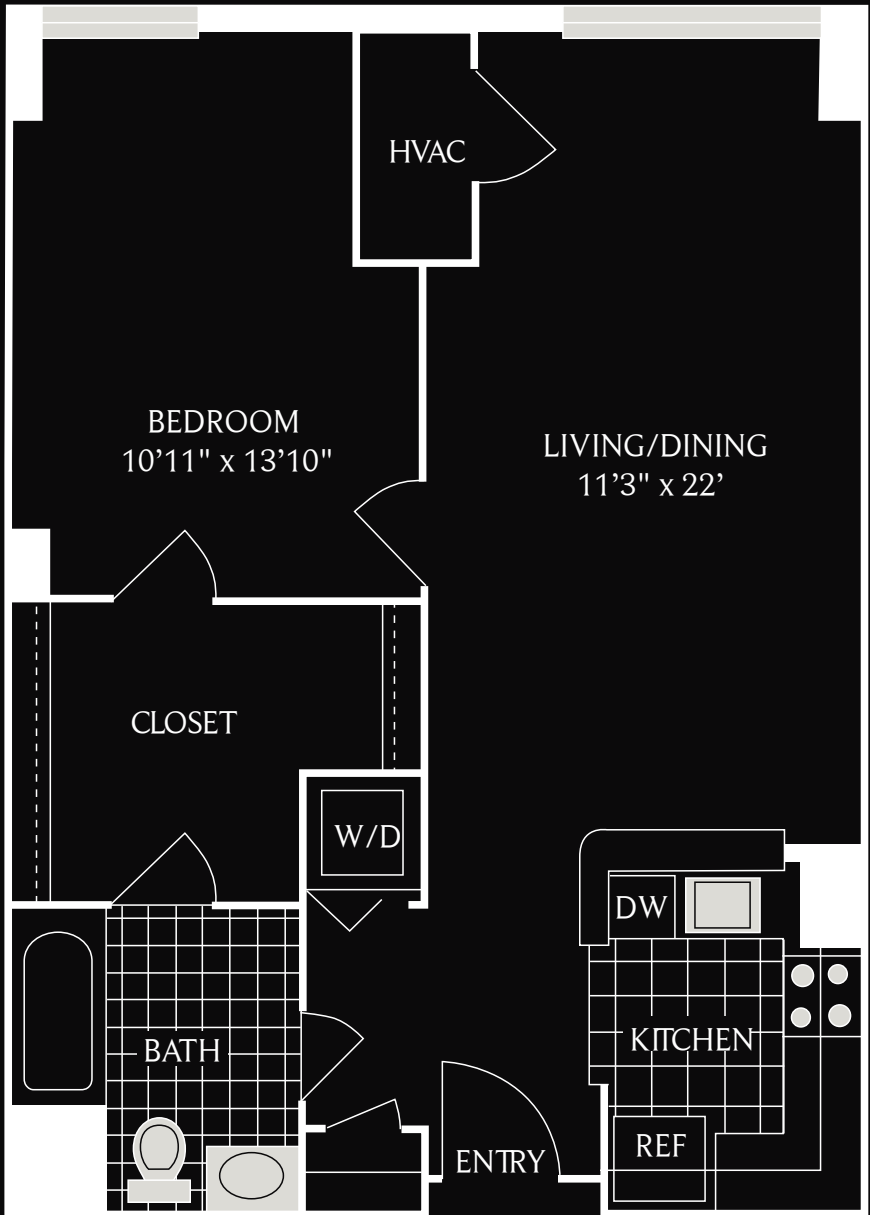
2701 Calvert Street, NW, Washington, DC 20008

t: 202-232-2610 f: 202-232-7373 | www.gables.com/woodleypark | woodleypark@gables.com



GABLES.
WOODLEY PARK

Manchester
One Bedroom/One Bath
760 SQ. FT



**GABLES.
WOODLEY PARK**
*Taking Care of
the Way People Live®*

Assisted By: _____
Unit #: _____
Rent: _____



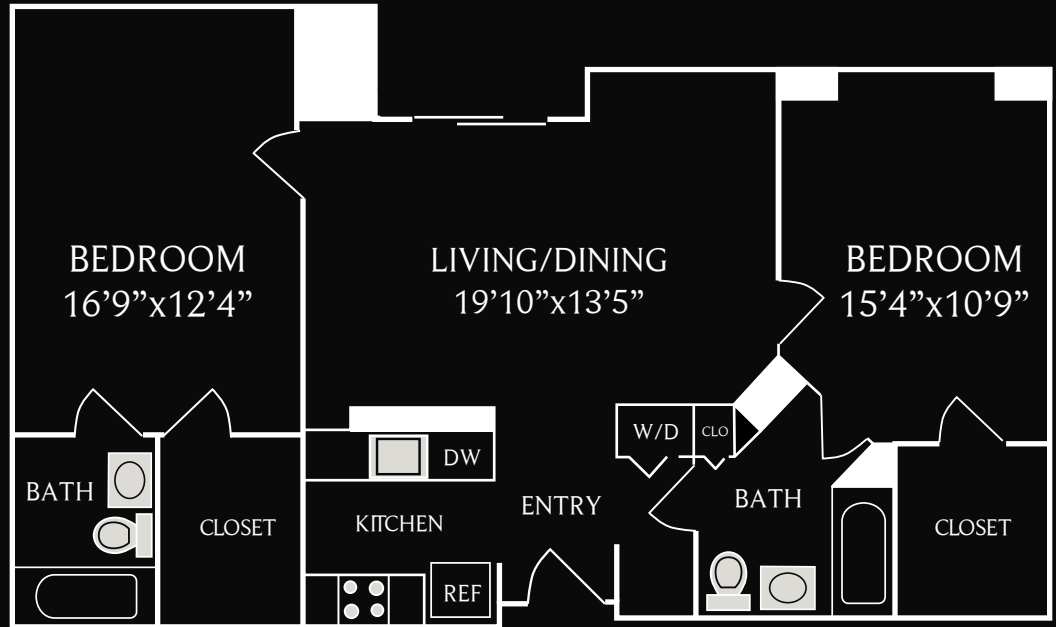
2701 Calvert Street, NW, Washington, DC 20008

t: 202-232-2610 f: 202-232-7373 | www.gables.com/woodleypark | woodleypark@gables.com



**GABLES.
WOODLEY PARK**

Manchester 2
Two Bedroom/Two Bath
1,090 SQ. FT



GABLES.
WOODLEY PARK

*Taking Care of
the Way People Live®*

Assisted By: _____

Unit #: _____

Rent: _____



2701 Calvert Street, NW, Washington, DC 20008

t: 202-232-2610 f: 202-232-7373 | www.gables.com/woodleypark | woodleypark@gables.com



GABLES.
WOODLEY PARK

Manchester 3
One Bedroom/One Bath
724 SQ. FT



GABLES.
WOODLEY PARK
*Taking Care of
the Way People Live®*

Assisted By: _____
Unit #: _____
Rent: _____

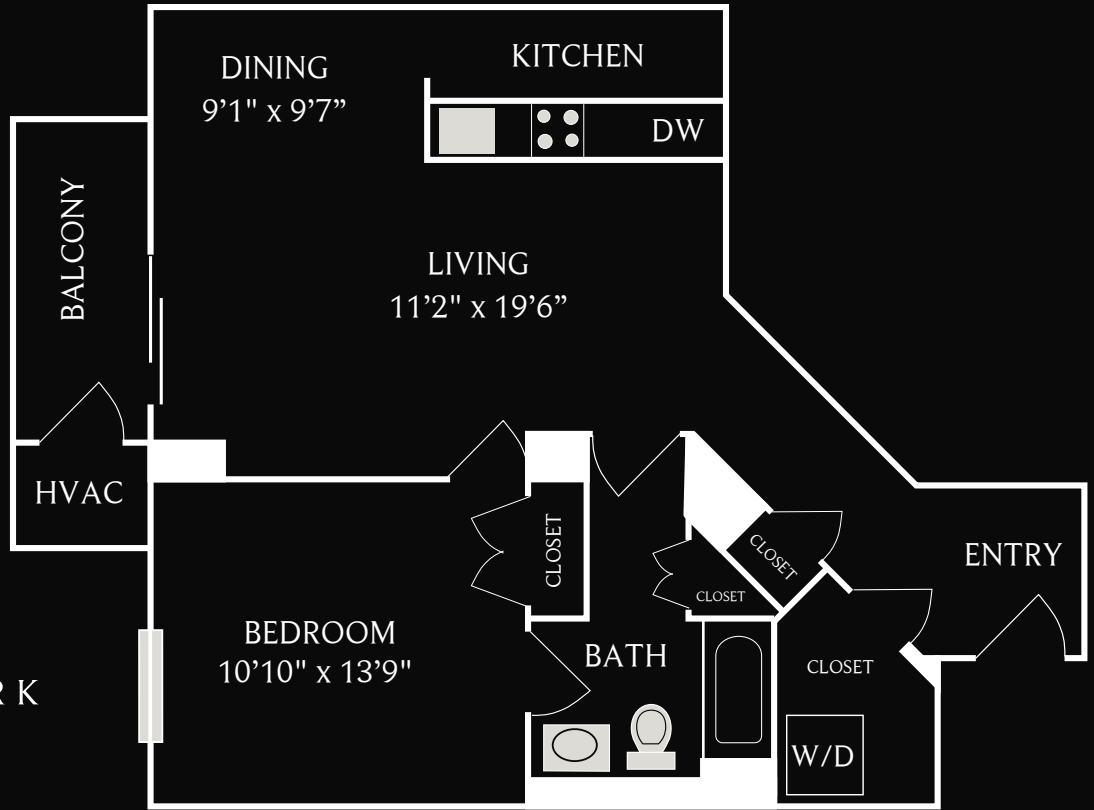



2701 Calvert Street, NW, Washington, DC 20008
t: 202-232-2610 f: 202-232-7373 | www.gables.com/woodleypark | woodleypark@gables.com



GABLES.
WOODLEY PARK

Manchester 4
One Bedroom/One Bath
902 SQ. FT




**GABLES.
WOODLEY PARK**
*Taking Care of
the Way People Live®*

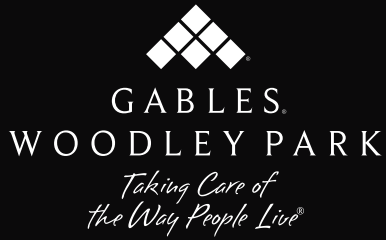
Assisted By: _____
Unit #: _____
Rent: _____



2701 Calvert Street, NW, Washington, DC 20008
t: 202-232-2610 f: 202-232-7373 | www.gables.com/woodleypark | woodleypark@gables.com


**GABLES.
WOODLEY PARK**

Manchester 5
One Bedroom/One Bath
693 SQ. FT



Assisted By: _____
Unit #: _____
Rent: _____

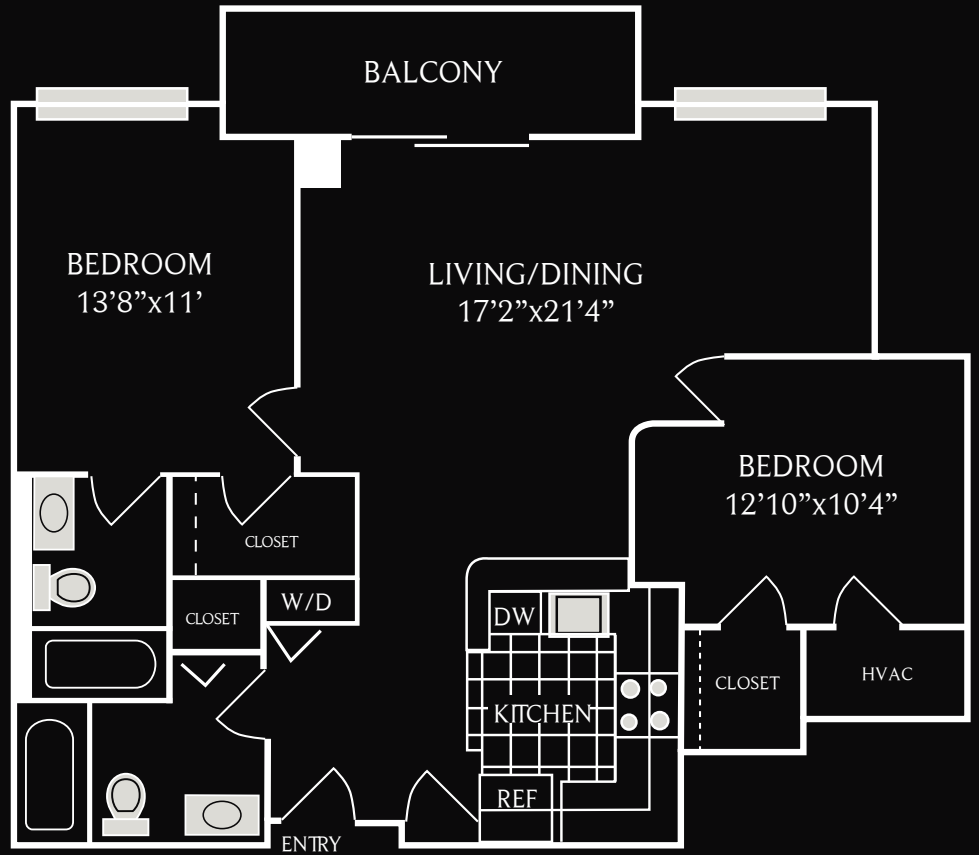


2701 Calvert Street, NW, Washington, DC 20008

t: 202-232-2610 f: 202-232-7373 | www.gables.com/woodleypark | woodleypark@gables.com



Manchester 6
Two Bedroom/Two Bath
1,027 SQ. FT



**GABLES.
WOODLEY PARK**
*Taking Care of
the Way People Live®*

Assisted By: _____
Unit #: _____
Rent: _____



2701 Calvert Street, NW, Washington, DC 20008

t: 202-232-2610 f: 202-232-7373 | www.gables.com/woodleypark | woodleypark@gables.com



**GABLES.
WOODLEY PARK**